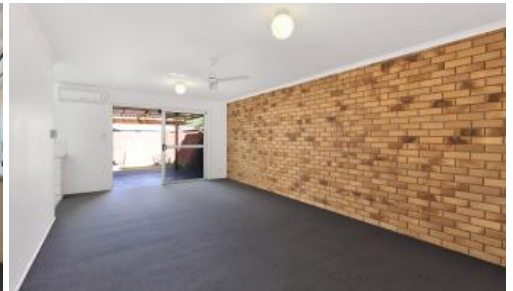


Leased

Unit 1, 9 Gayome St, Pacific Paradise



## UNDER APPLICATION/No further inspections

 2  1  1

Located in a highly sought after area, this bright and airy 2 bedroom, 1 bathroom duplex unit offers everything you need for low maintenance living. With an open plan design and generous living space, it's perfect for those looking for a comfortable retreat in a prime location. Across the road from Eliza Peatling Park with its BBQs and lush landscaping, great for family gatherings.

A peaceful and inviting community, ideal for those seeking a slower pace of life while being close to local amenities. Just a short walk to village centre shops, medical centre, primary school and tavern. An 8 minute bike ride to Mudjimba Esplanade with its cafes, parks and patrolled beaches. Maroochydore CBD is 10 minutes away by car.

Features include -

- Two bedrooms with built in wardrobes and ceiling fans
- Freshly painted with new flooring
- Generous fenced courtyards front and back
- Covered timber deck
- Functional kitchen
- Open plan, air conditioned living area

<b>Price</b>	\$600 PW
<b>Property Type</b>	Rental
<b>Property ID</b>	3164

### Agent Details

Maroochy North Shore Rentals -  
0754487700  
Shaylah Wyborn - 0754487700

### Office Details

Maroochy North Shore Realty  
644 David Low Way Pacific Paradise,  
QLD, 4564 Australia  
07 5448 7700



- Bathroom with shower and bath
- Separate laundry
- Single carport
- Water-compliant property – tenants will be responsible for water usage
- Tenants to maintain yard and garden areas
- Pets considered on application

This property would suit a couple, small family, or single person. Contact us to arrange an inspection. Hope to see you soon!

The above information provided has been furnished to us by the vendor/s. We have not verified whether or not that information is accurate and do not have any belief in one way or the other in its accuracy. We do not accept any responsibility to any person for its accuracy and do no more than pass it on. All interested parties should make and rely upon their own inquiries in order to determine whether or not this information is in fact accurate.