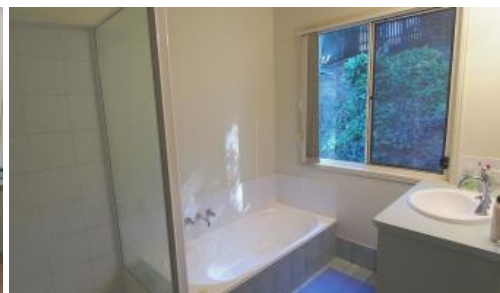


Sold

28 McCall Place, Bli Bli



Tree top sanctuary

This oversized two bedroom home has been built with lifestyle in mind. Situated at the top of an elevated cul-de-sac surrounded by trees with views across the valley to Buderim. When it comes to peace and privacy you'll struggle to find better.

- :: Air-conditioned open living connects to large deck area
- :: 3m/9ft ceilings provide a feeling of space throughout the home
- :: Split level design allows plenty of natural light and summer breezes
- :: Large kitchen with walk in pantry and plenty of bench space
- :: Built in robes to both bedrooms, ceiling fans and security screen doors
- :: Full length verandah and huge deck. Parking for 3 vehicles underneath
- :: Purpose built storage/workshop. Park & school at the end of the street
- :: Central position just 8 mins drive to the beach and Maroochydore CBD
- :: In good condition now with scope to easily modernise and add value

Even though the block is sloping there are terraced sections that provide a secure fenced garden for family and pets. Low maintenance landscaping provides total privacy and sanctuary from the every day hustle and bustle.

Investment information:

Rates & Water: Approx \$2,950/year

 2  1  3  1,053 m2

| | |
|---------------|-------------|
| Price | SOLD |
| Property Type | Residential |
| Property ID | 2768 |
| Land Area | 1,053 m2 |

Agent Details

Tony Brown - 0411074022

Office Details

Maroochy North Shore Realty
644 David Low Way Pacific Paradise,
QLD, 4564 Australia
07 5448 7700



Estimated Rental Income: \$350/week

The above information provided has been furnished to us by the vendor/s. We have not verified whether or not that information is accurate and do not have any belief in one way or the other in its accuracy. We do not accept any responsibility to any person for its accuracy and do no more than pass it on. All interested parties should make and rely upon their own inquiries in order to determine whether or not this information is in fact accurate.