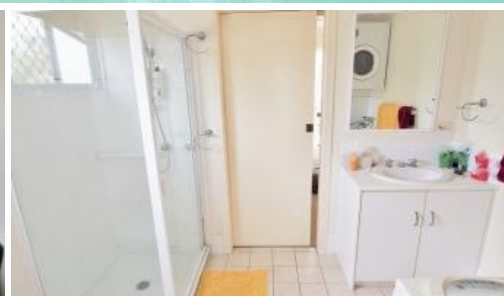


Sold



32, 38 David Low Way, Diddillibah



Change of Lifestyle Beckons

Comfortably easy living

Located in central area of the resort complex, right next to the inground pool, this quiet and extremely well maintained unit is now reluctantly available. Currently tenanted, this unit is available for investment or a base to call home.

Situated on the banks of Petrie creek and boating access to the Maroochy river, this resort is a handy location and within a short distance to all the facilities the Maroochydore CBD has to offer. This 2 bedroom partly furnished dwelling feels very spacious with open plan living/kitchen. The single bathroom located between both bedrooms creates a shared ensuite which includes the laundry. Enjoy the deck overlooking the pool and a place relax.

With full access to resort pools, and BBQ areas, to enjoy with friends along with access to a boat ramp for spending a day on the water.

Features include-

2 bedrooms with built ins & Ensuted bathroom

Open living/kitchen

🛏 2 🚿 1 🚗 1 🏠

Price

SOLD

Property Type

Residential

Property ID

2559

Floor Area

46.45 m2

Agent Details

Tony Brown - 0411074022

Office Details

Maroochy North Shore Realty
644 David Low Way Pacific Paradise,
QLD, 4564 Australia
07 5448 7700



Ceiling fans throughout& Air con

Garden shed

Single Carport

Communal BBQ & Pool area

Access to Maroochy river with boat ramp

Close to The Waterfront Hotel, public transport and Maroochydore CBD

A wonderful superannuation investment opportunity that only a few have experienced first hand and more are learning the benefits of these leasehold property investments. Call to find out more.

Investment information

Rental return \$1240pm

Body Corp/ground rent \$445pm

Insurance \$28pm

Elect & Water @ \$200pm

The above information provided has been furnished to us by the vendor/s. We have not verified whether or not that information is accurate and do not have any belief in one way or the other in its accuracy. We do not accept any responsibility to any person for its accuracy and do no more than pass it on. All interested parties should make and rely upon their own inquiries in order to determine whether or not this information is in fact accurate.