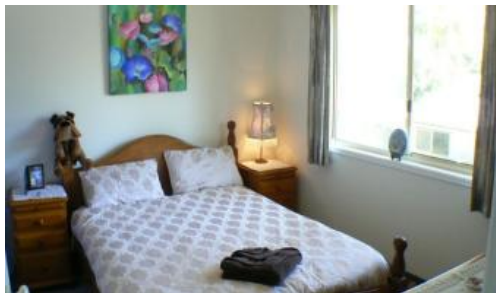




2, 7 Namba Street, Pacific Paradise



Easy living!

Quiet side street location on the beachside of the main road. Close to shopping, schools and services.

- 3 Bedrooms, open living, 1 bathroom
- Single garage has internal access & storage
- Internal living connects to outdoor deck area
- Large fenced courtyard (pet ok by application)
- Unit plumbed/ready for downstairs toilet
- 2km to the beach, 700ms to shopping & schools
- Low Body Corporate fee of \$1490/year
- Ready to move in, and plenty of room to add value!

Low maintenance exterior and small complex of only 6 units makes this an easy solution for the investor or owner-occupier.

The above information provided has been furnished to us by the vendor/s. We have not verified whether or not that information is accurate and do not have any belief in one way or the other in its accuracy. We do not accept any responsibility to any person for its accuracy and do no more than pass it on. All interested parties should make and rely upon their own inquiries in order to determine whether or not this information is in fact accurate.

3 1 1 120 m2

Price	SOLD
Property Type	Residential
Property ID	1934
Land Area	120 m2
Floor Area	92.90 m2

Agent Details

Tony Brown - 0411074022

Office Details

Maroochy North Shore Realty
644 David Low Way Pacific Paradise,
QLD, 4564 Australia
07 5448 7700

